

The First Annual California Reading Report Card, ranking school districts on effectiveness of reading instruction

- Heighten focus on California's 3+ million below-grade-level readers, and the role that districts play impacting reading achievement
- Identify top and bottom performing districts, to identify likely drivers of better reading results
- Create public accountability for districts, supporting Superintendents and Boards who focus on reading results
- Urge communities to advocate for increased attention to and accountability for reading results, particularly for low-income and students of color

How We Ranked Districts

- We ranked districts based on achievement by socio-economically disadvantaged (SED) Hispanic/Latino (Latinx) 3rd graders*
 - Compares “apples to apples” – only comparisons of students with similar demographics tell about district performance vs. enrollment mix
 - SED Latinx students make up 43% of all California K-12 students
 - These high-need students are less likely to receive reading supports outside of school (e.g., family, tutors), providing a clearer view of schools' contribution to reading success
 - 3rd grade is a critical reading milestone. Most students behind in 3rd grade never catch up, and often struggle in all subjects.
- We limited the ranking to districts with 100+ SED Latinx 3rd graders to reduce data variability (287 total districts)
- Ranks were based on the average of the 2017-18 and 2018-19 CAASPP ELA results

* For a more detailed discussion, see www.CAreads.org/why-these-students

Further Analysis

- We organized the rankings in groups of 10% (deciles) to compare the performance and characteristics of high and low performing districts
- We also looked at performance by county, based on the rankings of districts within each county
- We further surveyed top and bottom deciles districts to determine their elementary reading (ELA) curriculum

The Rankings – Top and Bottom 30 Districts

Full rankings are available on the California Reading Coalition website, www.CAreads.org

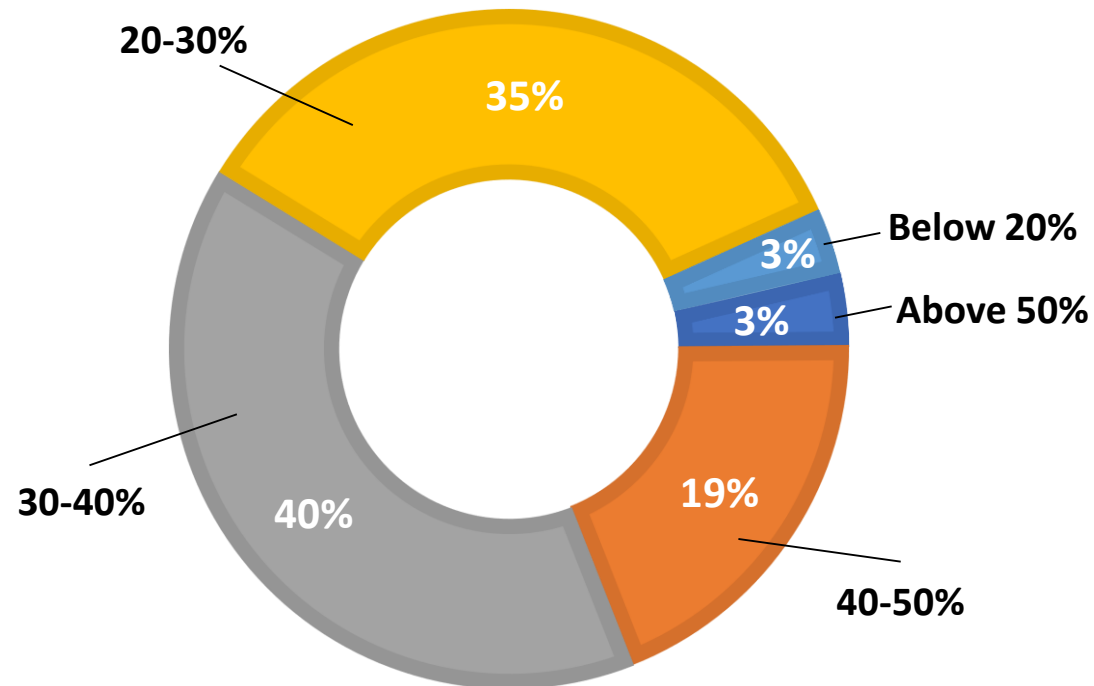
Rank	District	County	% High-Need Students	Meet & Exceed Grade level
1	Bonita Unified	Los Angeles	39%	64.4%
2	Etiwanda Elementary	San Bernardino	41%	57.4%
3	Kingsburg Elementary Charter	Fresno	51%	55.%
4	Clovis Unified	Fresno	45%	53.7%
5	Covina-Valley Unified	Los Angeles	69%	53.4%
6	Little Lake City Elementary	Los Angeles	71%	53.2%
7	Whittier City Elementary	Los Angeles	78%	51.%
8	Firebaugh-Las Deltas Unified	Fresno	92%	50.8%
9	East Whittier City Elementary	Los Angeles	57%	50.4%
10	Murrieta Valley Unified	Riverside	38%	50.1%
11	Lowell Joint	Los Angeles	42%	50.%
12	Downey Unified	Los Angeles	71%	49.5%
13	Greenfield Union	Kern	96%	49.%
14	Charter Oak Unified	Los Angeles	59%	48.5%
15	Chula Vista Elementary	San Diego	61%	48.1%
16	Magnolia Elementary	Orange	87%	47.9%
17	Imperial Unified	Imperial	60%	47.4%
18	Sulphur Springs Union	Los Angeles	53%	47.2%
19	Winton	Merced	81%	47.1%
20	Temecula Valley Unified	Riverside	31%	46.6%
21	Lawndale Elementary	Los Angeles	85%	46.6%
22	Hawthorne	Los Angeles	89%	46.5%
23	Burbank Unified	Los Angeles	38%	46.5%
24	Sanger Unified	Fresno	68%	46.4%
25	Santee	San Diego	40%	45.9%
26	ABC Unified	Los Angeles	54%	45.4%
27	Corona-Norco Unified	Riverside	49%	45.1%
28	Lennox	Los Angeles	94%	45.%
29	Bassett Unified	Los Angeles	93%	45.%
30	Carlsbad Unified	San Diego	26%	44.9%

Rank	District	County	% High-Need Students	Meet & Exceed Grade level
258	Arvin Union	Kern	97%	23.3%
259	Oak Grove Elementary	Santa Clara	47%	23.3%
260	Banning Unified	Riverside	89%	23.2%
261	San Lorenzo Unified	Alameda	69%	23.1%
262	Lake Tahoe Unified	El Dorado	59%	22.7%
263	Mt. Diablo Unified	Contra Costa	47%	22.6%
264	Southern Kern Unified	Kern	81%	22.5%
265	Evergreen Elementary	Santa Clara	41%	22.4%
266	Valley Center-Pauma Unified	San Diego	58%	22.2%
267	San Francisco Unified	San Francisco	57%	21.8%
268	Chowchilla Elementary	Madera	82%	21.7%
269	Barstow Unified	San Bernardino	79%	21.7%
270	Reef-Sunset Unified	Kings	94%	21.6%
271	Stockton Unified	San Joaquin	81%	21.6%
272	Dos Palos Oro Loma Joint Unified	Merced	91%	21.4%
273	Calexico Unified	Imperial	92%	21.3%
274	Parlier Unified	Fresno	99%	21.1%
275	Hueneme Elementary	Ventura	85%	21.%
276	San Rafael City Elementary	Marin	68%	20.9%
277	Riverbank Unified	Stanislaus	81%	20.6%
278	Morgan Hill Unified	Santa Clara	40%	20.3%
279	Palo Alto Unified	Santa Clara	17%	20.%
280	Pajaro Valley Unified	Santa Cruz	81%	19.1%
281	West Contra Costa Unified	Contra Costa	71%	19.1%
282	Oakland Unified	Alameda	76%	19.1%
283	Sonoma Valley Unified	Sonoma	61%	18.7%
284	San Mateo-Foster City	San Mateo	37%	18.5%
285	Ravenswood City Elementary	San Mateo	93%	18.2%
286	Fillmore Unified	Ventura	78%	16.2%
287	Ocean View	Ventura	84%	15.3%

Rankings Observations

- Districts are heavily weighted toward the lower end of performance
 - Only 1 district with over 60% of students* at grade level, only 12 at 50% or higher (3% of all ranked districts)
 - 38% of all districts achieved below 30%, meaning 70% or more of students* are below grade level in reading

Ranked Districts by % Students at Grade Level

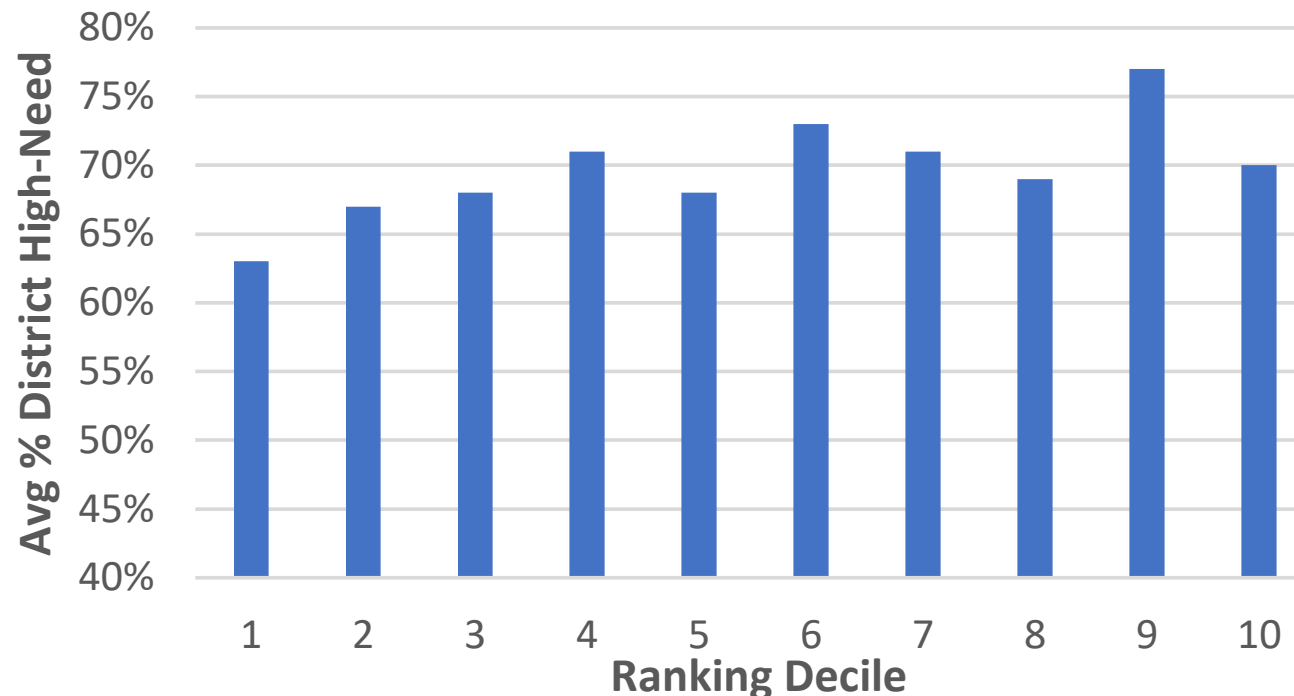


*"Students" refers to SED Latinx 3rd graders throughout

Relationship of Reading Achievement to % High Need

- There was a weak relationship between the district's overall percent of high-need enrollment and SED Latinx 3rd grader reading achievement
 - The top 3 deciles averaged 66% high-need enrollment vs. the bottom 3 deciles at 72%
 - Every decile had many instances of districts over 80% high-need enrollment, including 8 districts among the Top 30

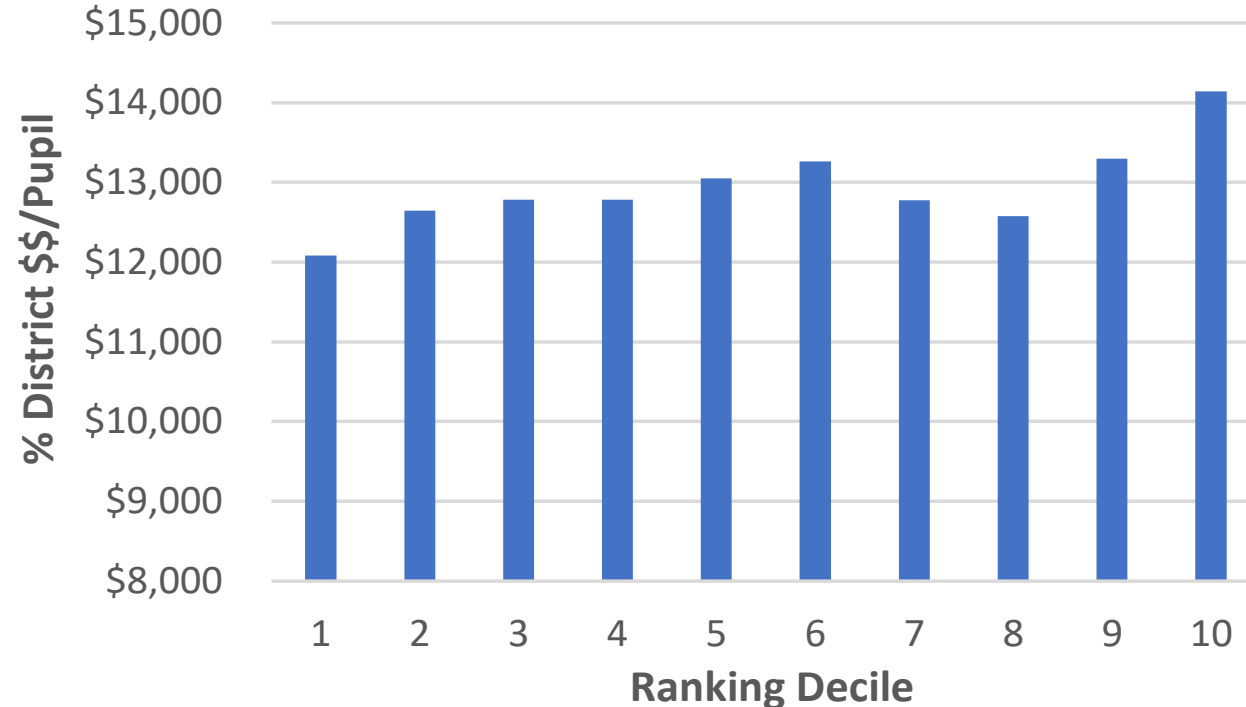
% District High-Need by Ranking Decile



Relationship of Reading Achievement and Funding Level

- The relationship between district funding level and achievement was also weak
 - The top decile has notably lower funding, driven in part by a smaller level of high-need enrollment
 - The bottom decile has notably higher funding, driven by four of the highest-funded districts in the rankings: San Francisco, Oakland, Palo Alto, and Ravenswood (East Palo Alto)
 - Other deciles are clustered in a tight range.

District Funding per Pupil by Ranking Decile



Relationship of Reading Achievement and Curriculum

- We surveyed the Top and Bottom Decile districts on their reading curriculum
 - The results showed some similarities - Benchmark and Wonders, two of the nation's leading curricula, were most popular in both groups
 - Teacher's College Units of Study, popularly known by its author, Lucy Calkins, stood out. It was used by only one of the Top Decile districts, but was tied for the most popular in the Bottom Decile

Curriculum Use by Top and Bottom Decile

Text	Publisher	Among Top 10%	Among Bottom 10%
Wonders	McGraw Hill	40%	27%
Benchmark	Benchmark	40%	18%
Journeys	HMH	8%	9%
Pearson Reading	Pearson	4%	0%
HMH Into Reading	HMH	4%	9%
Units of Study (Calkins)	Heinemann	4%	27%
F&P Classroom	Fountas & Pinnell	0%	5%
ARC Core	American Reading Co.	0%	5%

District Performance by County

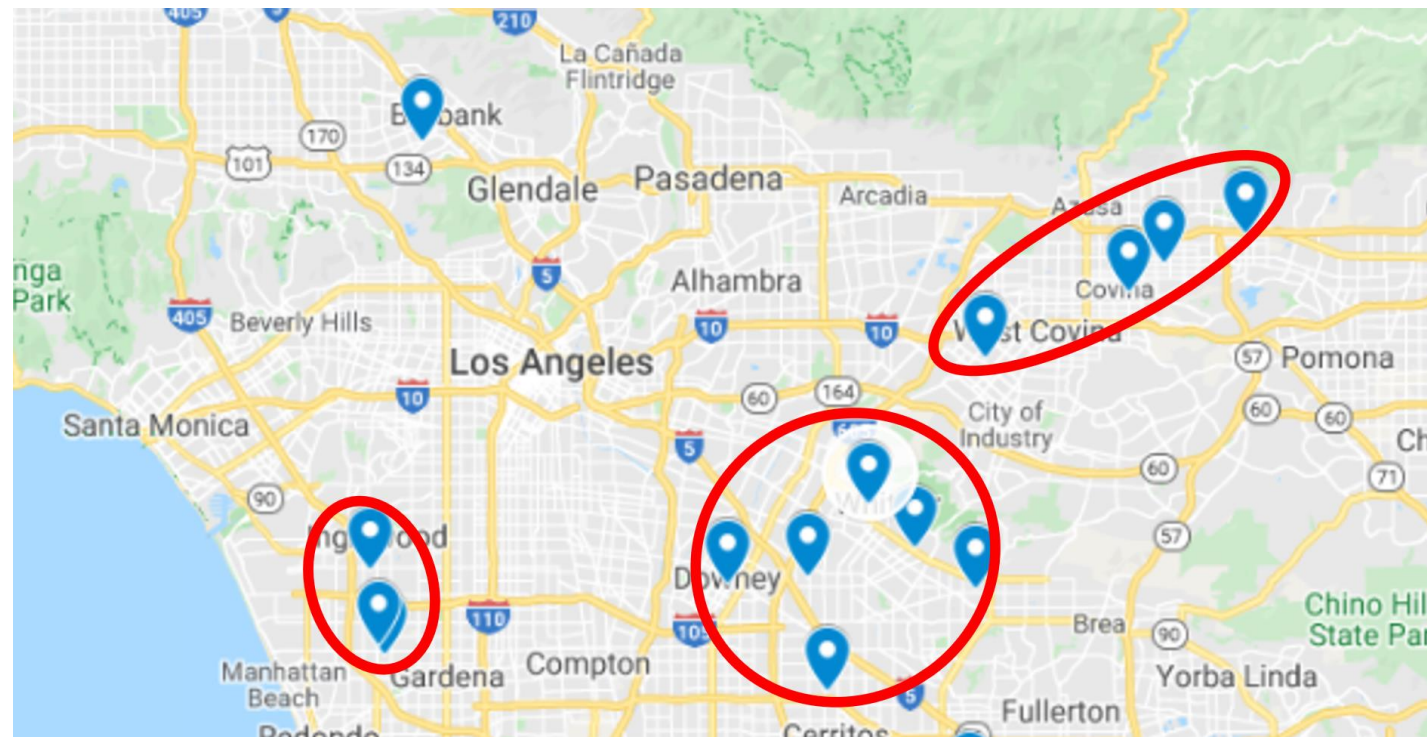
- We calculated the percent of ranked districts in each county in the top and bottom 20%
 - For example, 28% of the 18 ranked Orange County districts were in the top 20% of all districts; 11% were in the bottom 20.
- LA County is the clear stand-out
 - Over half its ranked districts are in the top 20%, and none in the bottom 20%
- Fresno County is also very strong
- Bay Area counties are consistently the lowest performers
 - SF, Alameda, Santa Clara, San Mateo and Contra Costa make up the 5 lowest ranked counties
 - None have any districts in the top 20%
 - All have 38% or more of their ranked districts in the bottom 20%

Performance by County

County	Districts	% In Top 20%	% In Bottom 20%
Los Angeles	48	54%	0%
Fresno	13	46%	15%
San Diego	18	22%	11%
Riverside	21	29%	5%
San Bernardino	20	15%	10%
Orange	18	28%	11%
Merced	8	25%	25%
Imperial	4	25%	25%
Tulare	11	9%	9%
Stanislaus	11	0%	18%
Santa Barbara	5	0%	20%
Kern	12	17%	33%
Kings	4	0%	25%
San Joaquin	5	0%	20%
Sacramento	8	0%	25%
Ventura	11	9%	36%
Sonoma	6	17%	17%
Monterey	9	0%	44%
Santa Clara	13	0%	54%
Contra Costa	6	0%	50%
San Mateo	5	0%	40%
Alameda	8	0%	38%
San Francisco	1	0%	100%

“Clusters” of High Performing Districts

- Even within counties, district performance can be highly clustered
 - LA County has three clusters of 3 to 5 of Top Decile districts, each in areas less than 20 miles wide
 - These clusters include districts with moderate (40%) to very high (90+%) levels of high-need enrollment



Key Takeaways from the Rankings

- While overall performance is disappointingly low, the Top Decile averages 50% over SED Latinx 3rd grade students at or above grade level
 - These include urban, suburban, and rural districts, across 10 different counties
 - Levels of high-need enrollment range from 39% to 96%
 - **Meaning – it can be done, without special circumstances or resources**
- Districts need to make a determined effort to focus on early reading
 - Neither funding level or level of high need enrollment determine reading achievement
 - Sustained improvement in results requires attention and commitment from Boards and Superintendents – leadership is the “X” factor in student achievement
- State level action is also likely needed
 - States that have made meaningful progress – e.g., Florida, Mississippi, Arizona – enacted statewide initiatives to focus attention on reading and improve and standardize practices



For the full report, see the California Reading Coalition website at www.CAReads.org

You can contact us at info@CAreads.org